

ZAP Rust Remover

Features & Benefits

- Removes Rust and Corrosion
- Safe Formula -
No Harmful Acids
- No Caustics
- No Harsh Fumes
- Non-Flammable
- pH Neutral
- Water Soluble
- Biodegradable

Markets

- Automotive • Construction
- Machine Shops • Industrial

Applications

- Tools • Parts • Fixtures
- Pumps • Equipment

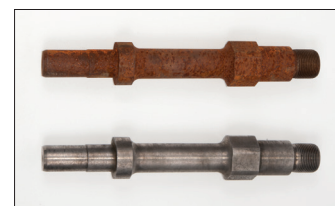
PRODUCT DESCRIPTION

A safe and powerful rust and oxidation remover. Quickly removes rust and corrosion from steel, cast iron and other ferrous metals. Does not harm nonferrous metals such as aluminum, copper or brass and is also safe on rubber and plastics. Quickly penetrates into crevices and metal pores due to special wetting agents so that all rust and corrosion is reached.



DIRECTIONS

Remove all excess and loose rust and metal flakes. Remove any grease or oil from surfaces with a cleaner and rinse with water. Immerse item to be treated. Rust removal will begin in as little as two minutes. Complete rust removal may occur in as little as five minutes for items with light rust. When used as directed, corrosion dissolves, no scrubbing necessary. For items with more severe rust, immersion for several hours may be necessary. Monitor the progress until all rust is gone. When rust is no longer visible on parts, remove parts and rinse with water. Do not leave parts in Zap for extended period of time after rust has been removed. After rinsing, allow parts to air dry completely before painting or coating. Product is ready-to-use. Solution can be used multiple times. As product reaches saturation, additional time may be required.



TYPICAL ANALYSIS

COLOR:..... Clear
 ODOR:..... Mild
 EVAPORATION RATE:..... <1
 FLASH POINT: N/A
 FREEZE/THAW: 3 Cycles
 pH: 6.2 - 6.6
 RINSEABILITY: Excellent
 HARD WATER STABILITY: Excellent
 SHELF LIFE: One Year +
 SOLUBILITY IN WATER: 100%
 SPECIFIC GRAVITY: 1.10

PACKAGING

M-27051	1 Gallon (4)
M-27055	5 Gallon
M-27057	55 Gallon
M-27053	275 Gallon



7403 Wright Rd. Houston, TX 77041
 ph: 832.399.1000 fax: 832.399.1010
www.ashburnchemical.com